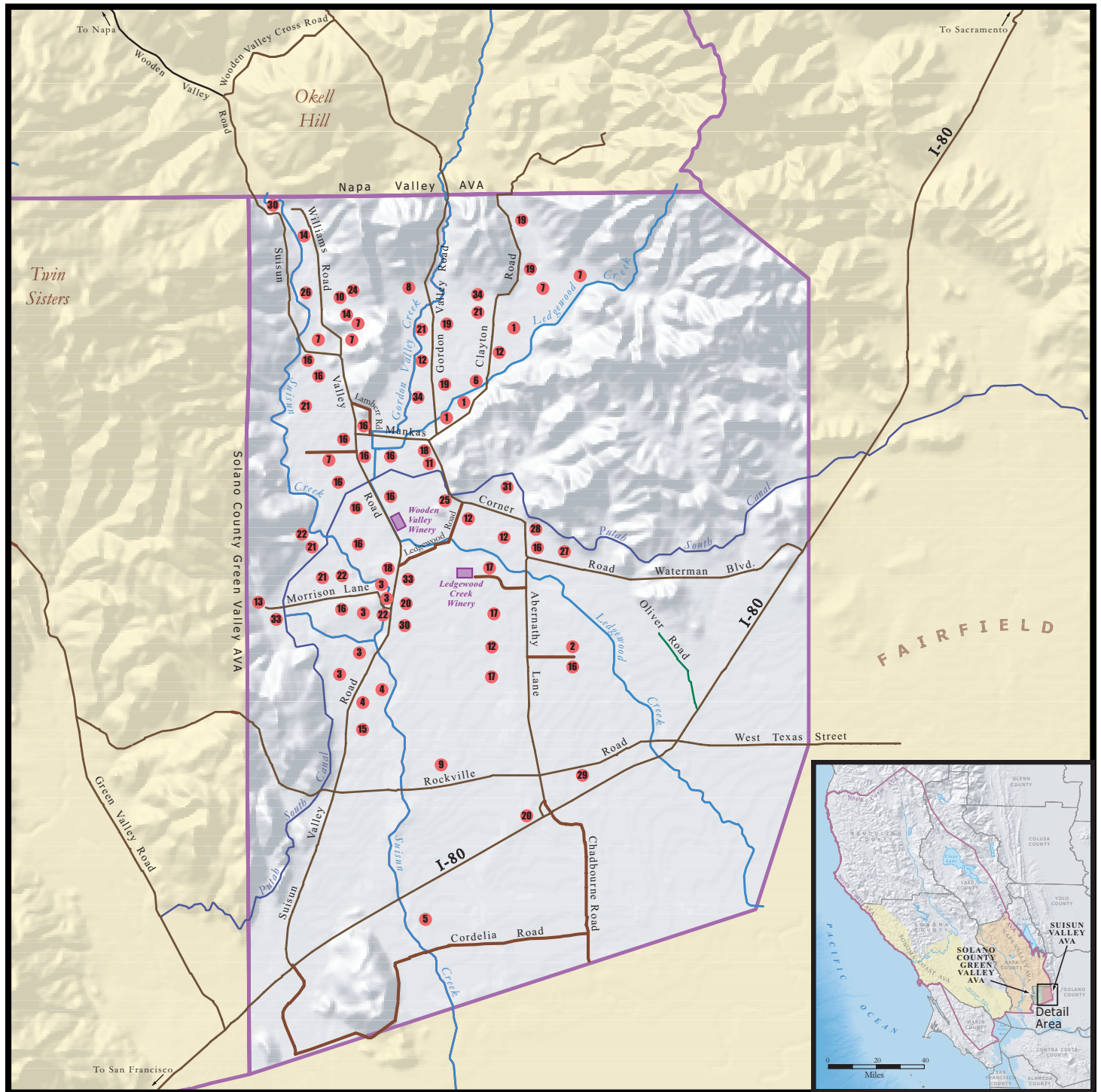
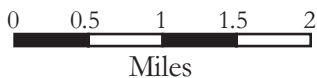


# Suisun Valley AVA



## Index of Growers - Suisun Valley Grape Growers Association

For more information visit [www.svgga.com](http://www.svgga.com)



Scale = 1 : 75,000

- |   |   |                                       |
|---|---|---------------------------------------|
| 1. A & J Custom Farming                   | 13. Greystone Creek Vineyards/Balestra  | 25. MGR Partners                      |
| 2. Andrews Vineyards                      | 14. Hansen Farms/Upper Valley Vineyards | 26. Denise Phillips                   |
| 3. Babcock Vineyards                      | 15. Johnson/Regusci Vineyard Management | 27. Adair/Regusci Vineyard Management |
| 4. Balestra/Delehanty                     | 16. Lanza Vineyards                     | 28. Solano Foothill Vineyard, LLC     |
| 5. Robert Balestra                        | 17. Ledgewood Creek Vineyards           | 29. Tenbrink Ranch                    |
| 6. Tom & Minnie Bourland                  | 18. Ledgewood Vineyards                 | 30. Twin Creek Vineyard               |
| 7. Lanny & Sandra Capp                    | 19. Lindemann Enterprises/M & I Ranch   | 31. V. Sattui Vineyards               |
| 8. Robert Carty                           | 20. Loney Ranch                         | 32. Pete Vernasco/Balestra            |
| 9. Casharago Vineyards/Biggs Family Trust | 21. M. German & Son Fruit Co.           | 33. Wine & Walker Ranch/Mangels       |
| 10. Chris & Traci Estes                   | 22. Mangels Ranch                       | 34. Wolfskill Ranches                 |
| 11. Leonard Gianni                        | 23. Mason Ranch                         |                                       |
| 12. Gordon Valley Farms                   | 24. Meades Ranch                        |                                       |

VESTRA



Map created by VESTRA Resources, Inc., Redding, CA. Copyright 2004